

## A new genus and new combinations in the family Issidae (Homoptera, Fulgoroidea)

V.M. Gnezdilov & M.R. Wilson

Gnezdilov, V.M. & Wilson, M.R. 2007. A new genus and new combinations in the family Issidae (Homoptera, Fulgoroidea). *Zoosystematica Rossica*, 15(2), 2006: 301-303.

A new genus *Pamphylium* gen. n. (type species: *Latematium cingulatum* Dlabola, 1983) is erected. *Irakopterum* Dlabola, 1985 is placed in synonymy under *Libanissum* Dlabola, 1980 and *Paratetrica* Distant, 1916 is placed in synonymy under *Thabenoides* Distant, 1916. New combinations for 11 species are proposed.

V.M. Gnezdilov, Zoological Institute, Russian Academy of Sciences, Universitetskaya nab. 1, 190034 St.Petersburg, Russia. E-mail: hemipt@zin.ru

M.R. Wilson, National Museums & Galleries of Wales, Cathays Park, Cardiff CF10 3NP, United Kingdom. E-mail: michael.wilson@museumwales.ac.uk

In the course of revisionary studies of the family Issidae *sensu lato* specimens of a number of species (including type specimens) have been examined and new combinations have been proposed. *Pamphylium* gen. n. is erected for *Latematium cingulatum* Dlabola, 1983 and *L. cypriacum* Dlabola, 1982. The new genus is distinguished by the structure of the male and female genitalia.

The material examined is deposited in the following collections: BMNH – The Natural History Museum, London, United Kingdom; ZMAN – Universiteit van Amsterdam, Zoölogisch Museum, The Netherlands; NMPC – National Museum of Natural History, Praha, Czech Republic; ZMH – Zoologisches Institut und Zoologisches Museum, Universität Hamburg, Germany; ZIN – Zoological Institute, Russian Academy of Sciences, St. Petersburg, Russia.

### Tribe Issini

#### Genus *Pamphylium* gen. n.

Type species: *Latematium cingulatum* Dlabola, 1983.

*Description.* Metope broad (1.15-1.25 times as wide as long), narrowed to clypeus, with microsculpture in shape of longitudinal striae; median and sublateral keels very weak. Coryphe transverse (2.0-2.5 times as wide as long), anterior margin convex, sometimes truncated apically, posterior margin concave. Pronotum without keels. Scutellum sometimes with lateral keels. Fore wing enlarged apically, with narrow hypocoastal plate; R 2 M 5-6 CuA 1. Hind wing rudimentary. Hind tibia with 2 lateral teeth. Metatarsomere I with 7 intermediate sole setae.

Male genitalia. Pygofer with convex hind margin. Anal tube elongate, enlarged apically, its apex truncated or with weak incision, lateral margins turned down. Anal column short and narrow. Dorsolateral phallobase lobes narrow apically (in lateral view), fused dorsally. Each lobe with short subapical process narrowing apically and with large hemicircular lobe covering phallostrema. Ventral phallobase lobe wide and short, narrowed apically, with median groove. Aedeagus without ventral hooks. Apical processes of aedeagus long and broad, narrowed apically. Style massive, hind margin convex near to capitulum, caudodorsal angle widely rounded. Capitulum on short neck, broad (in dorsal view), lateral tooth in shape of wide lobe, apical tooth distinct.

Female genitalia (Figs 1-3). Hind margin of sternum VII with a pair of deep incisions medially (Fig. 3). Anal tube elongate (in dorsal view), convex (in lateral view). Anal column short and wide. Gonoplacs without keels; first and second gonoplac lobes completely fused; furca well sclerotized, with long basal part. Proximal part of posterior connective lamina of gonapophyses IX convex. Distal parts of the lamina turned at obtuse angle (Fig. 1). Median field with fused lobes in shape of single elongate lobe. Lateral fields in shape of long processes. Hind margin of gonocoxa VIII with a lobe, which is wider proximally (Fig. 2). Endogonocoxal process gradually narrowed apically. Anterior connective lamina of gonapophyse VIII with 2 large teeth in apical group and 3 keeled teeth in lateral group; comb wide.

*Comparison.* The genus differs from the closely related genus *Latematium* Dlabola, 1979 in the longer coryphe, massive style with capitulum on short neck and median field of posterior connective.

tive lamina of gonapophyses IX with fused lobes in the shape of single elongate lobe.

**Composition.** The genus includes also *Latematium cypriacum* Dlabola, 1982.

**Distribution.** Turkey and Cyprus.

**Etymology.** The generic name is derived from Pamphylia, the Greek name of the region in Southern Turkey. Gender neuter.

#### Key to species

- 1(2). Metope 1.6 times as wide as long (measured medially). Coryphe 2.5 times as wide as long. Metope with broad transverse light yellow band ..... *P. cingulatum* (Dlabola)  
 2(1). Metope 1.4 times as wide as long. Coryphe twice as wide as long. Metope without band ..... *P. cypriacum* (Dlabola)

**Pamphylium cingulatum** (Dlabola, 1983),  
comb. n.

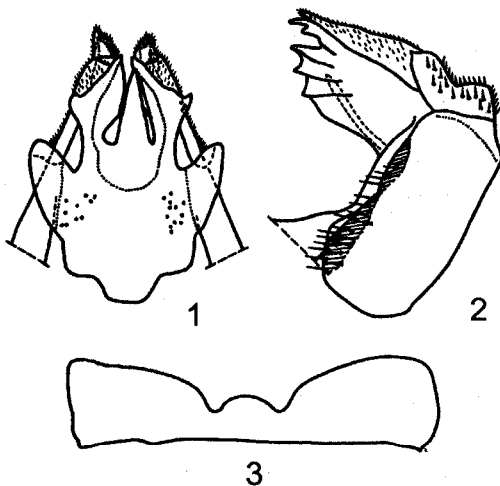
*Latematium cingulatum* Dlabola, 1983: 123.

**Material examined** (BMNH). **Turkey:** 1 ♀, Antalya Distr., Beldibi, 8-9.V.2001; 1 ♀, Döşemealti, 318 m, 11.V.2001, all leg. M. Barclay & D. Mann.

**Pamphylium cypriacum** (Dlabola, 1982),  
comb. n.  
(Figs 1-3)

*Latematium cypriacum* Dlabola, 1982: 150.

**Material examined** (ZMAN). **Cyprus:** 1 ♀, Tomarides, 3000 ft., 21.VI.1962, G.A. Mavromoustakis leg.



**Figs 1-3.** *Pamphylium cypriacum* (Dlabola), female. 1, posterior connective lamina of gonapophyses IX, dorsal view; 2, anterior connective lamina of gonapophyse VIII and gonocoxa VIII, lateral view; 3, hind margin of sternum VII.

#### Genus *Libanissum* Dlabola

*Libanissum* Dlabola, 1980: 218. Type species: *Libanissum talhouki* Dlabola, 1974.

*Irakopterum* Dlabola, 1985: 225, **syn. n.** Type species: *Irakopterum trispinatum* Dlabola, 1985.

***Libanissum trispinatum*** (Dlabola, 1985),  
comb. n.

*Irakopterum trispinatum* Dlabola, 1985: 225.

**Note.** The species belongs to the genus *Libanissum* according to the structure of the penis and style (Dlabola, 1985, figs 37-44).

#### Genus *Mulsantereum* Gnezdilov, 2002

Type species: *Hysteropterum maculifrons* Mulsant & Rey, 1855.

***Mulsantereum novaki*** (Wagner, 1962), comb. n.

*Hysteropterum novaki* Wagner in Novak & Wagner, 1962: 48.

*Falcidius novaki* Dlabola, 1980: 214.

**Type material examined** (ZMH). Paratype, ♀, [Croatia], Dalmatien, Sušak, 20.VI.[19]49, P. Novak leg.

#### Genus *Scorlupaster* Emeljanov, 1971

Type species: *Hysteropterum asiaticum* Lethierry, 1878.

***Scorlupaster emersum*** (Dlabola, 1981), comb. n.

*Hysteropterum emersum* Dlabola, 1981: 184.

**Type material examined** (NMPC). Holotype, ♂, paratype, ♀, N Iran, Widf. Park Robat-e Quareh Bil, 1000 m, 30.VII.1970.

#### Genus *Kervillea* Bergevin, 1918

Type species: *Kervillea ancyrana* Bergevin, 1918, junior synonym of *Hysteropterum placophorum* Horváth, 1905.

***Kervillea anatolica*** (Dlabola, 1979), comb. n.

*Falcidius anatolicus* Dlabola, 1979: 280.

**Type material examined** (NMPC). Paratype, ♂, Turkey, C. Anatolia, Gürün, 16.VI.1970.

#### Genus *Inflatodus* Dlabola, 1982

Type species: *Hysteropterum viridans* Dlabola, 1974.

***Inflatodus persicus*** (Dlabola, 1981), comb. n.

*Hysteropterum persicum* Dlabola, 1981: 181.

*Type material examined* (NMPC). Holotype, ♂, N Iran, C Elburz, Kuhha-ye Tu-Chal, 3600-3900 m, 18-19.VII.1970; paratype, ♀, N Iran, Abyek, 24.VI.1970.

#### Genus *Samantiga* Distant, 1906

Type species: *Samantiga abdominalis* Distant, 1906.

#### *Samantiga venosa* (Distant 1906), comb. n.

*Devagama venosa* Distant, 1906: 348.

*Type material examined* (BMNH). Type, ♀, Nilgiri, Hampson leg.

#### Tribe Thioniini

#### Genus *Thabenoides* Distant

*Thabenoides* Distant, 1916: 90. Type species: *Thabenoides albinotata* Distant, 1916.

*Paratetrica* Distant, 1916: 92, syn. n. Type species: *Paratetrica opalina* Distant, 1916.

*Note.* *Paratetrica distanti* Baker, 1927 (type, ♀, Batu Isl. (BMNH), was examined) probably does not belong to the genus *Thabenoides*, because it has the metope with median keel running across postclypeus and weak sublateral keels in its apical part.

#### *Thabenoides opalina* (Distant, 1916), comb. n.

*Paratetrica opalina* Distant, 1916: 92.

*Type material examined* (BMNH). Type, ♂, S. India, Kodai Kanal, Campbell leg.

#### Genus *Syrgis* Stål, 1870

Type species: *Issus simplex* Walker, 1858, junior homonym, non Germar, 1830 (= *Syrgis walkeri* Metcalf, 1958).

#### *Syrgis gravis* (Walker, 1857), comb. n.

*Issus gravis* Walker, 1857: 153.

*Type material examined* (BMNH). Type, ♀, Sarawak, Wallace leg.

#### Genus *Redarator* Distant, 1916

Type species: *Redarator bimaculatus* Distant, 1916.

#### *Redarator fletcheri* (Distant, 1916), comb. n.

*Brahmaloka fletcheri* Distant, 1916: 87.

*Type material examined* (BMNH). Type, ♀, North Goorg, Santikoppa, 4-10.V.1914, Fletcher leg. "Fraserpet, Coorg., F.R.P".

#### Acknowledgements

The first author was financially supported by grants from the Royal Society (London, UK) and Russian Foundation for Basic Research (no. 06-04-48427). We are sincerely grateful to Mr. M. Webb (BMNH), Dr. J.P. Duffels and Mr. M. Hogenes (ZMAN), Prof. H. Strümpel (ZMH), and Dr. P. Kment (NMPC) for the opportunity to examine the material.

#### References

- Distant, W.L. 1906. *The fauna of British India, including Ceylon and Burma, Rhynchocha*, 3 (Heteroptera - Homoptera). London: Taylor & Francis. 503 p.
- Distant, W.L. 1916. *The fauna of British India, including Ceylon and Burma, Rhynchocha*, 6 (Homoptera: Appendix). London: Taylor & Francis. 248 p.
- Dlabola, J. 1979. *Tshurtshurnella, Bubastia* and andere verwandte Taxone (Auchenorrhyncha, Issidae). *Acta entomol. Bohemosl.*, 76(4): 266-286.
- Dlabola, J. 1980. Tribus-Einteilung, neue Gattungen und Arten der Subf. Issinae in der eremischen Zone (Homoptera, Auchenorrhyncha). *Acta Mus. nat. Pragae*, 36B(4): 173-247.
- Dlabola, J. 1981. Ergebnisse der tschechoslowakisch-iranischen entomologischen Expeditionen nach den Iran (1970 und 1973) (Mit Angaben über einige Sammelresultate in Anatolien). Homoptera: Auchenorrhyncha (II. Teil). *Acta entomol. Mus. nat. Pragae*, 40: 127-311.
- Dlabola, J. 1982. Fortsetzung der Ergänzungen zur Issiden-Taxonomie von Anatolien, Iran und Griechenland (Homoptera, Auchenorrhyncha). *Acta Mus. nat. Pragae*, 38B(3): 113-169.
- Dlabola, J. 1983. Neue mediterrane, meistens anatolische Issiden (Homoptera, Auchenorrhyncha). *Acta entomol. bohemoslov.*, 80: 114-136.
- Dlabola, J. 1985. Neue mediterrane, eremische und ostafrikanische Issiden-Taxone (Hom., Auchenorrhyncha). *Acta Mus. nat. Pragae*, 40B(3-4): 217-243.
- Novak, P. & Wagner, W. 1962. Prilog poznavanju faune Homoptera Dalmacije. *God. biol. Inst. Univ. Sarajevo*, 15: 31-53.
- Walker, F. 1857. Catalogue of the Homopterous insects collected at Sarawak, Borneo, by Mr. A.R. Wallace, with descriptions of new species. *J. Proc. Linn. Soc. Zoology*, 1: 141-182, pls VII, VIII.

Received 8 December 2006